



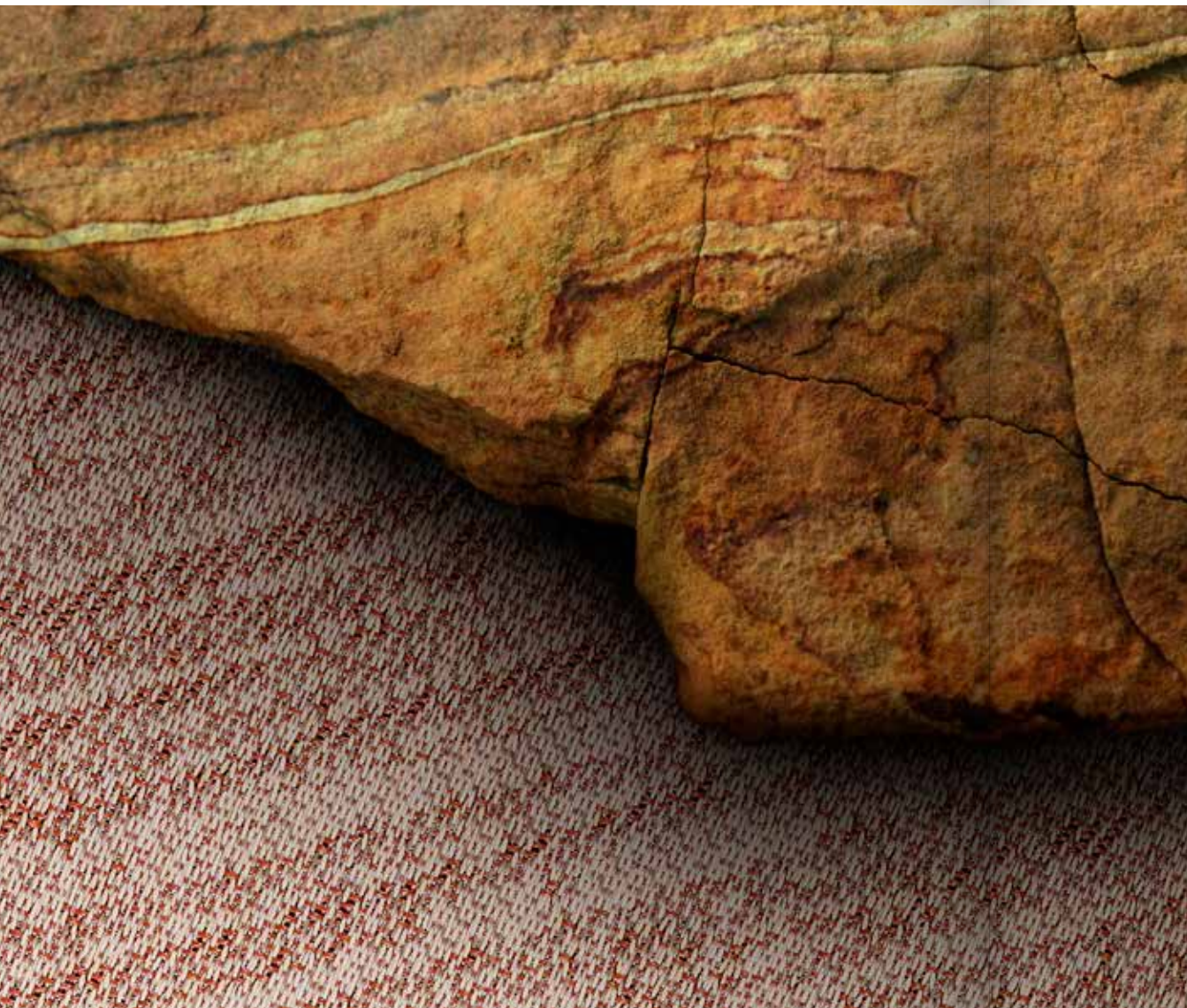
Strata

Collection

2tec2[®]
high tech flooring

Strata collection

Introduction	2
Bio-Based	5
Arkose	6
Azurite	7
Coal	8
Pyrite	10
Chalk	11
Garnet	13
Shale	14
Silica	15
Serpentine	16
Product overview	18
Installation patterns	20



The mystical
tranquility of nature
woven into
your floor coverings.

The layers of the earth serve as inspiration for the Strata collection and are clearly incorporated into the design. As a silent witness to our evolution, the stratification in rocks and stones creates a robust play of lines – a symbol of timeless progress. Strata's line motif lives and breathes: with endless variation, the natural pattern creates fascinating markings on the floor.

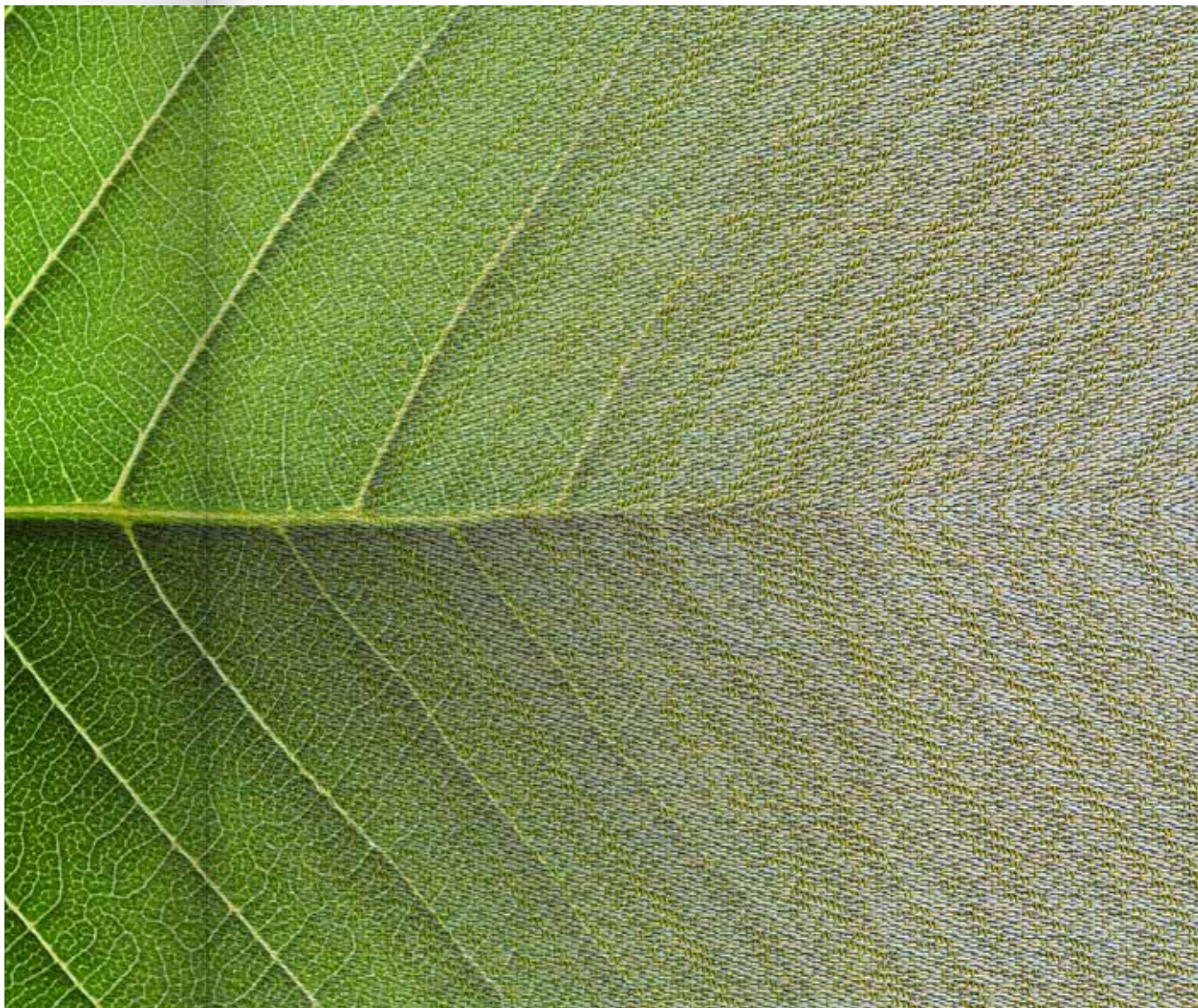
Interwoven with nature

2tec2 is proud to introduce you to its first **Bio-based collection**.

We are replacing fossil fuels in our yarns with innovative plant-based raw materials. Thanks to this step, the woven top layer contains renewable materials, thus making your flooring more sustainable.

In addition to this important green evolution, the felt backing on this collection is composed of **100% recycled content**. The acoustic underlayer is entirely made from recycled PET bottles and **reduces sound up to 22 dB**.

Discover our entire sustainability journey on 2tec2.com.



Arkose



Plank 20 x 75 cm (7.87" x 29.53") - Installation pattern: A/B

The distinctive granular character of arkosic sandstone is like a beautiful mosaic of tiny quartz and rock fragments.

This was the inspiration for the Arkose pattern that mimics the coarse texture of the beautiful sandstone by interchanging light and dark hues, evoking a feeling of vibrancy and movement in your interior design.

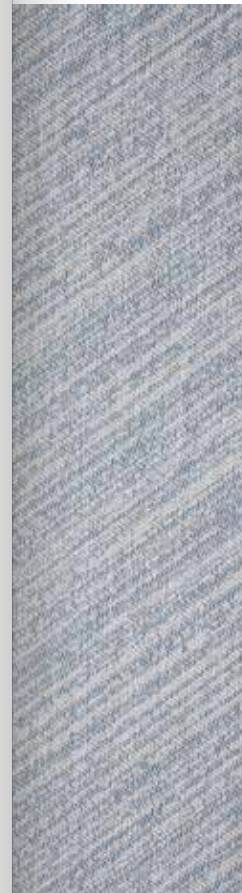


Plank 20 x 75 cm (7.87" x 29.53") - Installation pattern: AA/BB

Azurite

The deep blue pigment of the azurite mineral has been used for centuries to liven some of the world's most historic artwork, from Ancient Egypt throughout the Renaissance. Today, the color remains as enticing as ever.

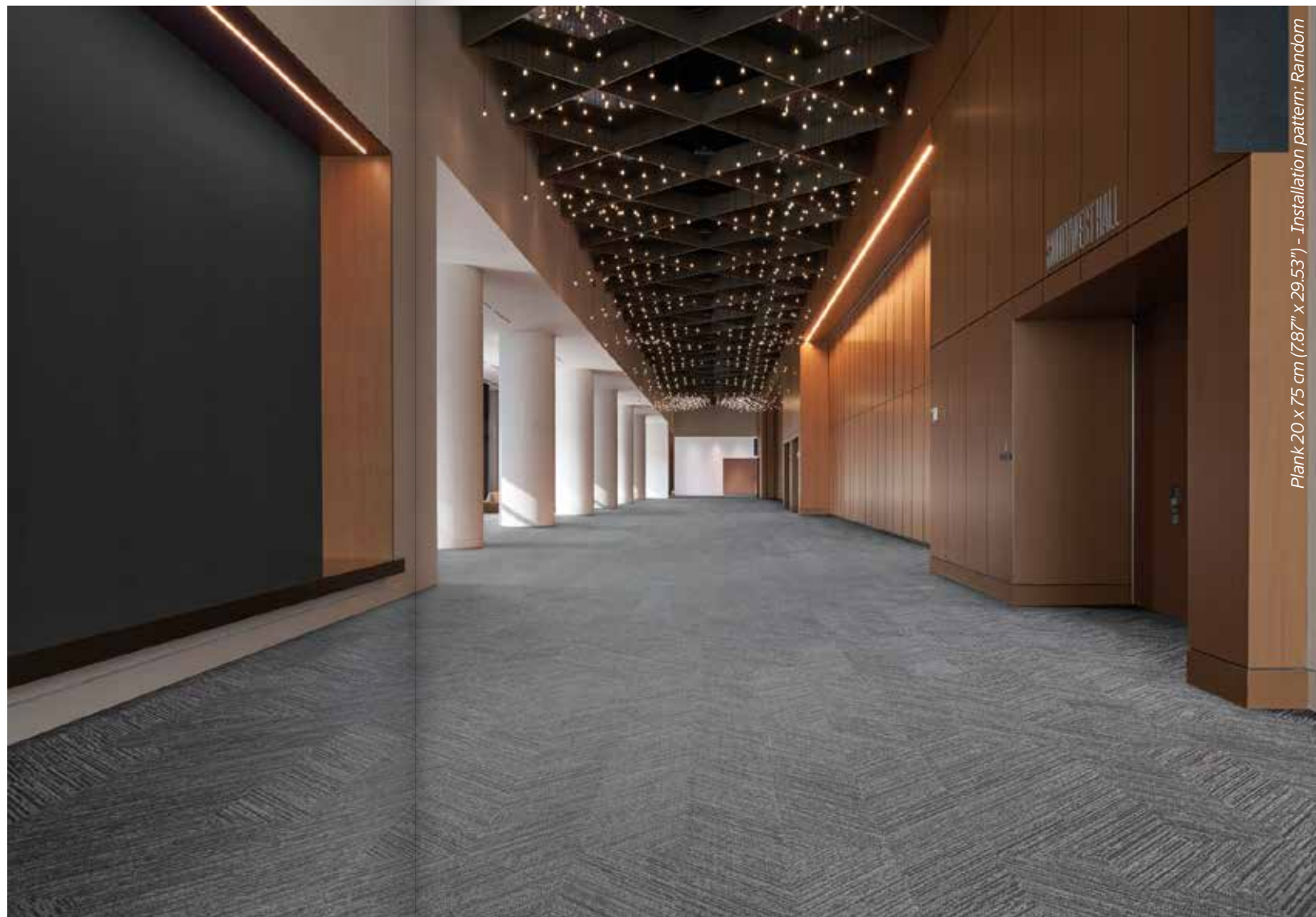
Combining captivating blue with lighter hues, Azurite transforms your interior into a singular work of art.





Coal

Like soft strokes of charcoal on paper, Coal livens up your interior by smoothly blending dark and light shades and bringing them together in a vivacious pattern, creating a sense of gentle movement that transforms your interior into an intriguing work of art.



Plank 20 x 75 cm (7.87" x 29.53") - Installation pattern - Random



Pyrite

Ancient Greeks gave the shiny, brass-colored mineral pyrite its name to mean 'stone that creates sparks', which is exactly what this pattern does.

This intricate motif of interwoven golden and light hues bathes your interior in warmth and decadence, adding a regal touch to every room.



Plank 20 x 75 cm (7.87" x 29.53") - Installation pattern: Random



Plank 20 x 75 cm (7.87" x 29.53") - Installation pattern: A/B

Chalk

Imagine the soft, dusty patterns left by chalk on a contrasting surface, which is what this neutral yet elegant pattern evokes.

With its bright yet understated hues, this motif elevates any interior design without dominating the space.





Garnet

For over 5000 years, garnet minerals have been worn as gemstones due to their striking blood-red color and supposed rejuvenating properties.

Our Garnet motif extends that trend to interior design, infusing rich red hues with specks of lighter colour to breathe warmth and fire into your interior.



Plank 20 x 75 cm (7.87" x 29.53") - Installation pattern: Random

Shale

Plucked from the mystique depths of lakes, lagoons and rivers, the peculiar character of the shale stone is further enhanced by its unique texture of uneven layers. Shale evokes the singular hypnotic pattern of the stone it is named after by interlacing neutral light and dark hues, steeping your interior in spellbinding movement and texture.



Silica

With its mesmerizing crystal-like beauty and healing properties, silica minerals are highly sought after bringers of balance. This Silica pattern injects sparkle and harmony into your interior, evoking a sense of calm and content.



Plank 20 x 75 cm (7.87" x 29.53") - Installation pattern: AA/BB



Plank 20 x 75 cm (7.87" x 29.53") - Installation pattern: A/B

Serpentine

Serpentine minerals owe their name to the Latin for 'serpent rock', a reference to the vibrant green scales of snakes. The minerals were used to embellish architectural settings through centuries, and this tantalizing pattern continues the tradition with its symbiosis of dark green and lighter hues that lends a classic touch to your interior.

Product overview



Silica



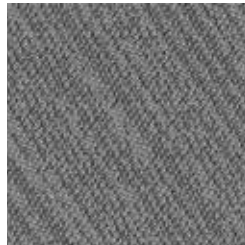
Chalk



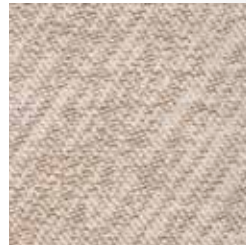
Arkose



Shale



Coal



Pyrite



Azurite



Serpentine



Garnet



Tile 50 x 50 cm (19,69" x 19,69") - Installation pattern: Diamond

Installation patterns

Strata's line motif lives and breathes: with endless variation, the natural pattern creates fascinating markings on the floor.

This vibrant collection can be installed in various ways, creating a unique and geometric play of lines: diagonal, crossing or diamond-shaped. Just as in nature, the possibilities are endless.



Plank A

Plank B



Plank 20 x 75 cm (7.87" x 29.53")
Installation pattern: Random staggered AA/BB



Tiles - 50 x 50 cm (19.69" x 19.69")
Installation pattern: Diamond



Tiles - 50 x 50 cm (19.69" x 19.69")
Installation pattern: Ashlar A/B



Plank 20 x 75 cm (7.87" x 29.53")
Installation pattern: Random staggered A/B



Plank 20 x 75 cm (7.87" x 29.53")
Installation pattern: Random staggered Mix



Strong and long-lasting

- Extremely robust
- Resists office chairs & heavy traffic
- Long life span & UV-resistant



Sustainable footprint

- Bio-based top layer
- Felt backing made of recycled PET
- Designed for circularity: fully recyclable
- Suitable for projects according to BREEAM, LEED & WELL Building Standard®



Hygienic and easy to clean

- Stain resistant & waterproof
- Maintenance with clear water, no chemicals



Acoustic sound absorption

- 70 dB walking noise reduction
- 22 dB sound reduction



High quality & high comfort

- 100% designed & made in Belgium
- Excellent underfoot comfort
- Antibacterial, mould-free & anti-allergic properties



High tech, high design.

- High-end look, full design flexibility
- Tiles & planks
- 2tec2 Play tiles in various shapes

Headquarters and showroom
(BY APPOINTMENT)

Chaussée d'Aelbeke 284
7700 Mouscron
+32 (0)56 843 450
sales@2tec2.com

2tec2.com





2tec2[®]
high tech flooring