

# Hybrid

COLLECTION



MADE IN  
BELGIUM

COMMERCIAL WOVEN VINYL FLOORING  
FOR  
WORKSPACES, HOSPITALITY, HEALTHCARE,  
PUBLIC SPACES AND RETAIL

2TEC2.COM

# Biophilic Design



The Hybrid collection is inspired by the biophilic design philosophy. Biophilia is the inborn need people possess for contact with nature, which is essential to their physical and mental health, productivity and wellbeing.

Satisfying this need for contact with nature in the modern built environment is something called biophilic design.

It is also a design developed to forgive the hardship of heavy traffic in commercial projects. Seams, stains and wear will be magically 'blown away'. This new Hybrid collection has a profound carpet appearance and will arouse the curiosity of designers.

With this look and feel and the superior functional properties of woven vinyl such as strength, stain resistance, this new collection is a revolution. Hybrid is the perfect harmony between hard and soft flooring combining the best of both worlds.

2tec2 Hybrid comes with the proprietary 'Comfort Backing', a felt acoustic backing reducing the impact sound by 19dB and improving underfoot comfort in general.

Comfort Backing is standard across the entire 2tec2 collection making it the preferred contract flooring for architects and interior designers all over the world.

Hybrid is available in roll, seamless tiles and various shapes and comes in 12 colours.





ABOVE: SOLARIS TILES  
BELOW: METEOR TILES



ABOVE: METEOR TILES  
BELOW: SOLARIS TILES



INSTALLED IN 2 DIFFERENT DIRECTIONS  
TO CREATE 2 SHADES.



STARDUST TILES







SOLARIS TILES



ROSETTA TILES









INSTALLED IN 2 DIFFERENT DIRECTIONS  
TO CREATE 2 SHADES.



CELESTE TILES







ROSETTA TILES



ROSETTA TILES



DARKSIDE TILES



DARKSIDE TILES







HELIOS TILES



HALLEY TILES





# Collection Overview







VISUAL APPEARANCE BASED ON INSTALLING DIRECTION



Helios



Stellar



Magellan



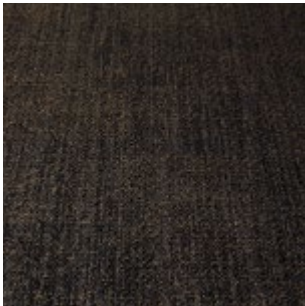
VISUAL APPEARANCE BASED ON INSTALLING DIRECTION



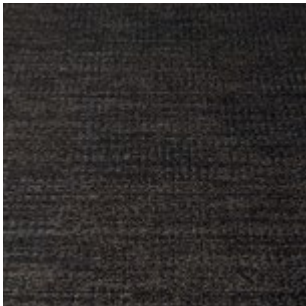
Stardust



Borealis



Solaris





VISUAL APPEARANCE BASED ON INSTALLING DIRECTION



Meteor



Celeste



Galena



VISUAL APPEARANCE BASED ON INSTALLING DIRECTION



Halley



Darkside




















Rosetta





# TECHNICAL INFO

Warranty		10 years*
Composition		83% vinyl 7% fiberglass 10% PET
Backing		Vinyl + Felt
	Total thickness	ISO 1765 5mm 0.20"
	Total weight	ISO 8543 3000 g/m <sup>2</sup> 88.5 oz/yd <sup>2</sup>
	Roll width	EN ISO 24341 ca. 200cm ca. 6'7"
	Roll length	EN ISO 24341 ca. 30m 32.8 yd
	Tile size 16 pcs per box	EN 994 50cm x 50cm 19.69" x 19.69"
	Level of Use	EN 1307 ASTM D5252 Class 33 Heavy commercial use
Foot traffic test		ASTM D6119-12 Heavy traffic
	Castor chair suitability	EN 985 Continuous use
	Reaction to fire	EN 13501-1 Bfl-s1
Critical radiant flux		ASTM E648-15e1 NFPA 0.84 W/cm <sup>2</sup> Class I
Smoke density		ASTM E622 < 300
	Walking test	ISO 6356 AATCC 134-2006 < 2 kv Permanently antistatic
	Light fastness	ISO 105-B02 ≥ 7
	Slip resistance	EN 13893 ASTM C1028-07 DIN 51130 EM 13036-4 ≥ 0,3 0,85 R9 65
	Impact sound reduction	ISO 10140 19dB
	Acoustical absorption	ISO 354 αw = 0,15
	Walking noise reduction	EPLF 021029-3 SL70
	Dimensional stability	EN 986 ISO 2551 Meets the requirements
	Thermal resistance	ISO 8302 Suitable for underfloor heating
	CE Certificate	EN 14041 0493-CPR-0151

Co<sup>2</sup> neutral on demand

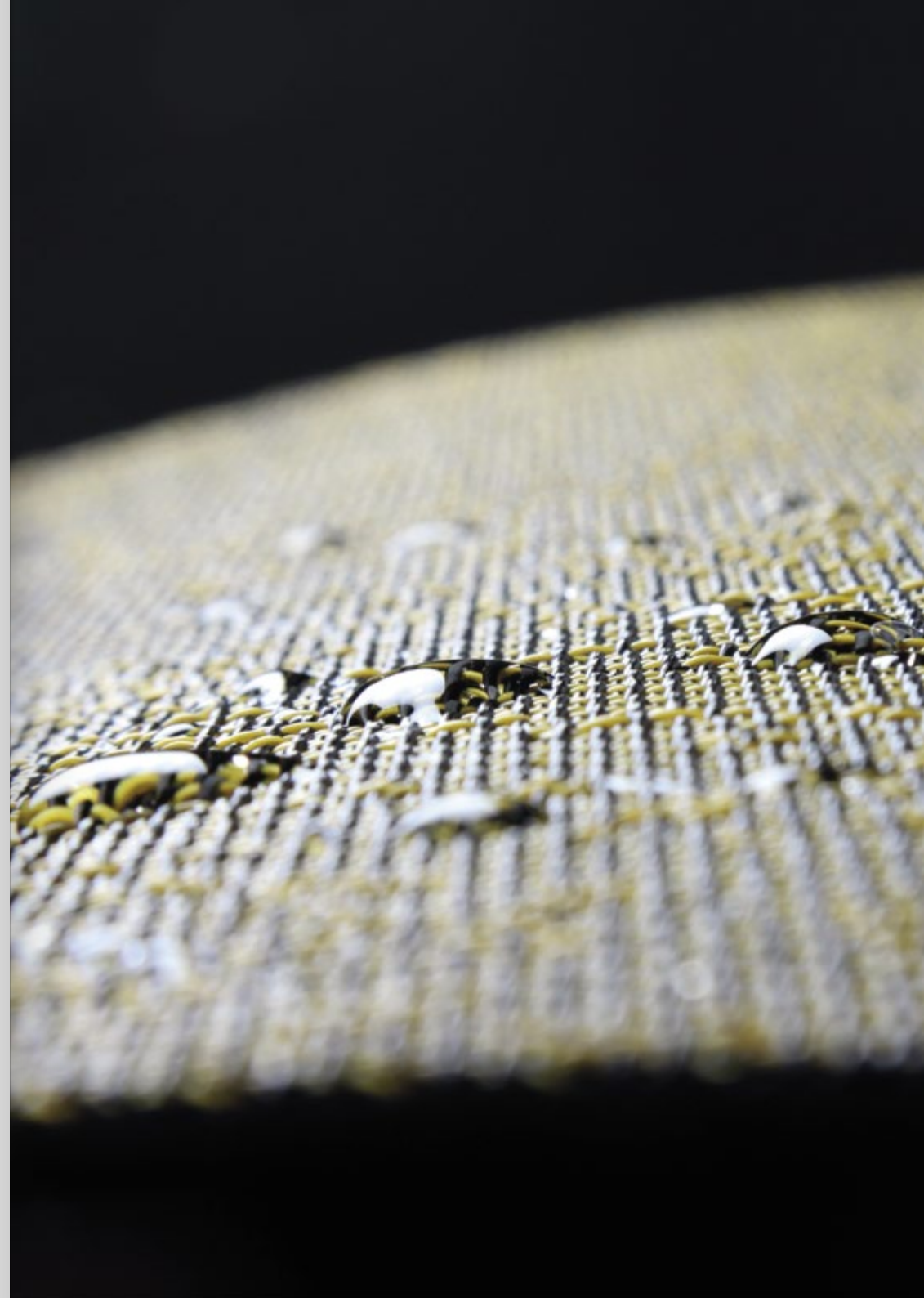
\* Terms and conditions are available on request

\*\* Standard from 09/2018



## Environment, health and safety

Recycled Content	10%
Reach	Compliant
LEED v4	Compliant (LEED Contributing Product)
CDPH Standard Method V1.2	Pass
BREEAM® International	Compliant
BREEAM® NOR	Pass
French VOC Regulation	A+ Certified
French CMR components	Pass
AGBB/ABG	Pass
Belgian VOC Regulation	Pass
Indoor Air Comfort Gold	Pass
Blue Angel (RAL UZ120)	Pass
EN 717-1	E1
M1 Protocol of July 2017	Pass
Plasticizer Content	Phthalate Free**



## 2TEC2 HEADQUARTERS

284, CHAUSSÉE D'AELBEKE  
7700 MOUSCRON, BELGIUM  
T +32 (0)56 85 47 47  
INFO@2TEC2.COM

2TEC2.COM





**2tec2<sup>®</sup>**  
high tech flooring

MADE IN BELGIUM - 2TEC2.COM