

The background of the entire page is a dark, monochromatic marbled pattern. It features intricate, vein-like structures in shades of charcoal and black, creating a complex, organic texture that resembles natural stone or mineral deposits.

2tec2[®]
high tech flooring

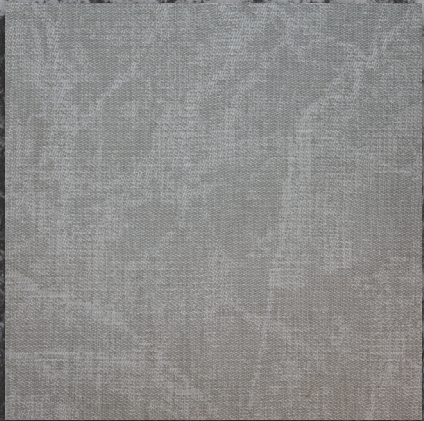
MINERALS | COLLECTION OVERVIEW

MARBLE

Eminent, regal, and everlasting.
These words come to mind when viewing our Marble collection.

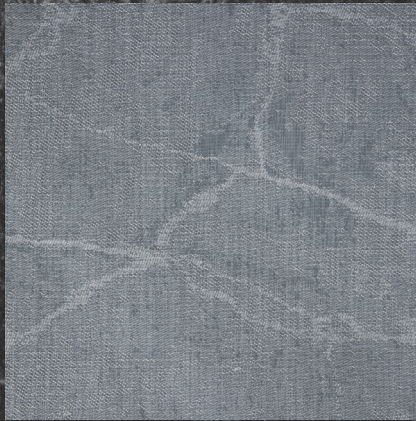
This collection is inspired by the crystalline material that has been used to build impressive palace halls and acted as the canvas for breathtaking monuments throughout the ages.

Each design features the wild, yet purposeful streaks of color that are unique to its namesake, echoing the controlled chaos that can only come from nature's own design.



Carrara

Roll • Tile



Fior

Roll • Tile



Aliveri

Roll • Tile



Portoro

Roll • Tile



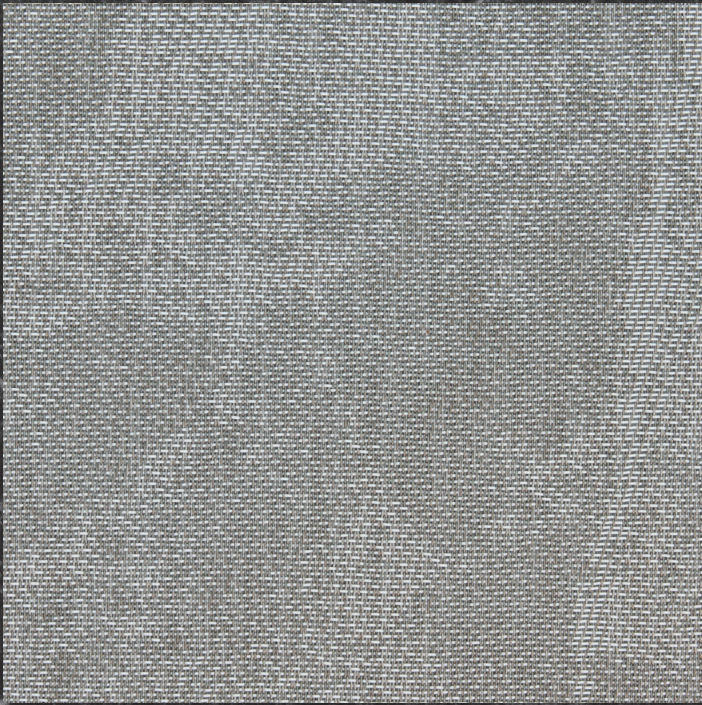
Triana

Roll • Tile



Emperador

Roll • Tile



CARRARA

Named after the stone unique to the quarries of Tuscany, Carrara features stark veins of white against a muted, base tone. Used by the great Roman empire to construct monuments to the gods, this pattern imitates the immense power and reverence of those houses to the cosmic entities of a forgotten past.



DESERT

The Desert collection pays homage to the awe-inspiring stretches of arid wasteland that blanket our planet.

Though, the pattern may appear simple, just like the terrain it's named for, each piece is made of a unique and vibrant ecosystem, which creates an impressive, everlasting impression.

The visual elements of each piece, emulating shifting desert sands, will bring occupants back to the unadorned ways of life our nomadic ancestors once lived.



Farafra

Roll • Tile



Antarctic

Roll • Tile



Hoyos

Roll • Tile



Karakum

Roll • Tile



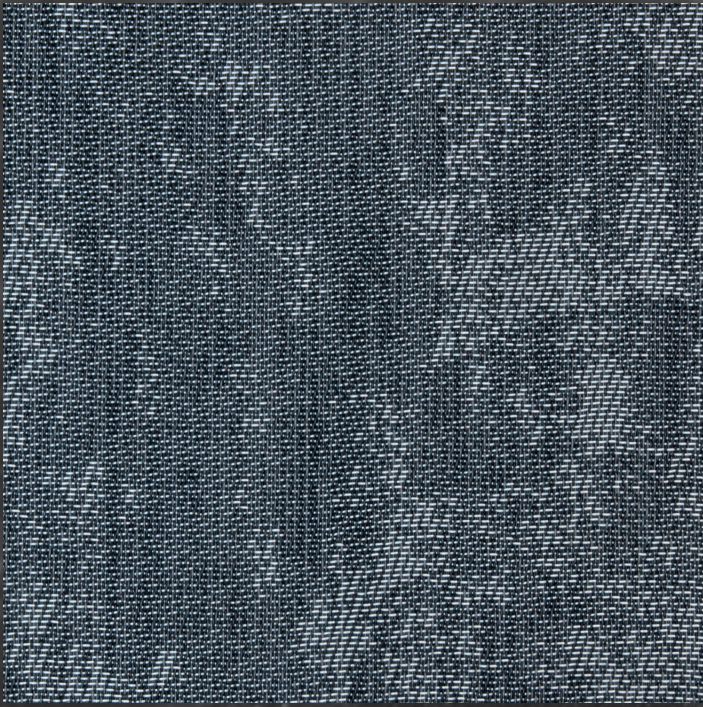
Gobi

Roll • Tile



Namib

Roll • Tile




























KARAKUM

Karakum is named for the immense Central Asian desert, home to some of the world's most beautiful, and most terrifying, geological wonders. This pattern exhibits large patches of color, spread across stretches of darker, emboldened tones.



TECHNICAL DATA


Warranty		10 years*	 Environment, health and safety
Composition		83% vinyl 7% fiberglass 10% PET	Recycled Content Yes
Backing		Vinyl + Felt	Acoustical layer 70% recycled content
 Total thickness	ISO 1765	5 mm 0.20"	Reach Compliant
 Total weight	ISO 8543	3000 g/m ² 88.5 oz/yd ²	LEED v4 Compliant (LEED Contributing Product)
 Roll width	EN ISO 24341	ca. 200 cm ca. 6'7"	BREEAM [®] International Compliant
 Roll length	EN ISO 24341	ca. 30 m 32.8 yd	CDPH Standard Method V1.2 Pass
 Tile size	EN 994	50 x 50 cm 19.69" x 19.69"	BREEAM [®] NOR Pass
 Level of use	EN 1307 ASTM D5252	Class 33 Heavy commercial use	French VOC Regulation A+ Certified
Foot traffic test	ASTM D6119-12	Heavy traffic	French CMR components Pass
 Castor chair suitability	EN 985	Continuous use	AGBB/ABG Pass
 Reaction to fire	EN 13501-1	Bfl-s1	Belgian VOC Regulation Pass
Critical radiant flux	ASTM E648-15e1 NFPA	0.84 W/cm ² Class I	Indoor Air Comfort Gold Pass
Smoke density	ASTM E622	< 300	Blue Angel (RAL UZ120) Pass
 Walking test	ISO 6356 AATCC 134-2006	< 2 kv Permanently antistatic	EN 717-1 E1
 Light fastness	ISO 105-B02	≥ 8	M1 Protocol of July 2017 Pass
 Slip resistance	EN 13893 ASTM C1028-07 DIN 51130 EM 13036-4	≥ 0,3 0,85 R9 65	Plasticizer Content Phthalate Free
 Impact sound reduction	ISO 10140	19 dB	
 Acoustical absorption	ISO 354	α _w = 0,15	
 Walking noise reduction	EPLF 021029-3	SL70	
 Dimensional stability	EN 986 ISO 2551	Meets the requirements	
 Thermal resistance	ISO 8302	Suitable for underfloor heating	
 CE Certificate	EN 14041	0493-CPR-0151	
			

CO₂ neutral on demand - *Terms and conditions are available on request

0.1

INSTALLATION PATTERNS FOR TILES

Monolithic 

Quarterturn 

DESIGNED
& MADE IN
BELGIUM

